

# Trailer Hopper Vibrators



## Consistent Material Flow in Your Truck and Trailer Discharge

Even the harshest conditions won't bother our Truck and Trailer Vibrators. With multiple models designed for continuous duty and protection from environmental elements, they have a reputation for ensuring maximum up-time and material flow — even with high load applications. Cleveland Vibrator's DC Electric Motors are a great choice as a flow aid on trailers or truck beds in the agriculture, aggregate, concrete, field maintenance and snow and ice industries. They also work as an efficient option on spreaders and portable screeners.

### BENEFITS INCLUDE

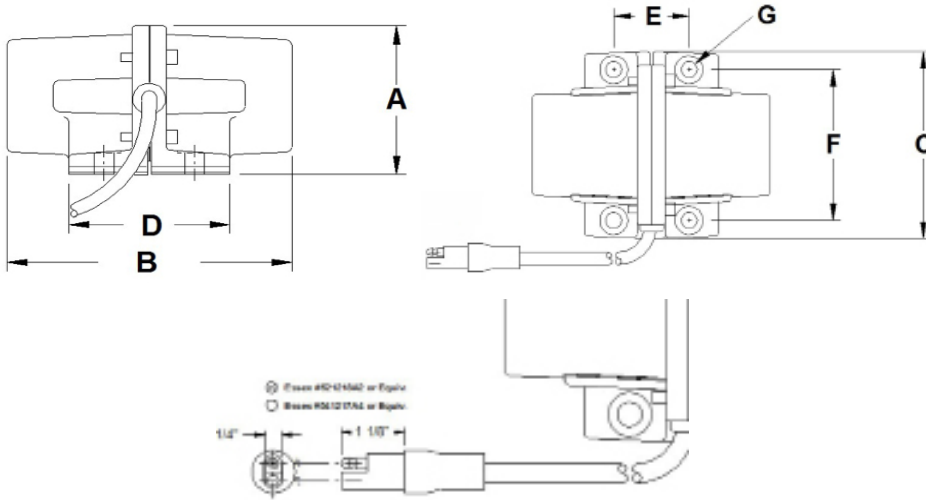
- Promote consistent and even flow in spreaders, chutes, hoppers and dumps.
- Eliminate costly carry back
- Reduce unload time and dump bed raise angle
- Avoid risk of dump trailer tip over due to uneven material sticking
- Prevent damage to your trailer or truck by eliminating use of hammers or backhoes to unload
- Remove safety hazards of trailer or bed entry and human unload assistance

# Small Load Hopper or Spreader



## MG-80 & MG-200 FOR SMALL LOADS

Designed for protection from environmental elements, our MG Series have a reputation for ensuring maximum up-time and material flow in spreaders and small hoppers. Light-weight and durable, the MG Series offers an efficient vibratory aid for small load applications.



\*45" Lead Cord

MODEL	A	B	C	D	E	F	G
MG-80	3.6"	6.3"	5.0"	4.0"	2.0"	4.0"	0.44"
MG-200	3.6"	6.3"	5.0"	4.0"	2.0"	4.0"	0.44"

MODEL	VOLT	AMP DRAW	WEIGHT	FORCE	FREQ. (RPM)	RECOMMENDED OPERATION TEMPERATURE	DUTY CYCLE	HOPPER SIZE
MG-80	12V	4	4 lbs	100 lbs	2900	-25°F thru 125°F*	Continuous Duty	1 cu. yd. 1,000 lbs. max
MG-200	12V	14	5 lbs	300 lbs	4400	-25°F thru 100°F*	Continuous Duty	2 cu. yd. 3,000 lbs. max

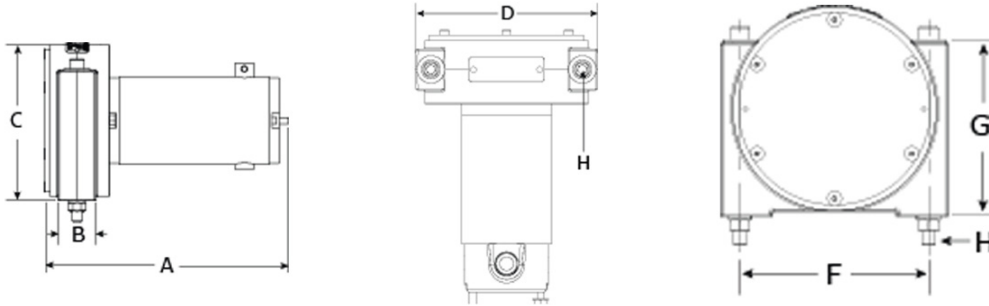
**\*Note:** Intermittent operation can occur outside this temperature range but will not be covered under warranty.

**\*\*Ensure that the vibrator temperature does not exceed 150°F.**

# Medium Load Hopper or Dump

## MG-400, MG-800 & MG-1200 FOR MEDIUM LOADS

The MG 12 Volt or 24 Volt DC Electric Vibrator turns shaft-mounted eccentric weights to create rotary vibration which produces a uniform, directional flow of bulk materials. The continuous duty rated vibrators come permanently lubricated making it a low maintenance option for material flow or truck dump body applications. Its rugged housing and heavy duty design can handle the toughest of environments.



MODEL	A	B	C	D	F	G	H
MG-400-12	10.05"	1.5"	6.12"	6.63"	5.5"	5.09"	0.44"
MG-800-12	10.05"	1.5"	6.12"	6.63"	5.5"	5.09"	0.44"
MG-1200-12	10.05"	1.5"	6.12"	6.63"	5.5"	5.09"	0.44"
MG-400-24	10.05"	1.5"	6.12"	6.63"	5.5"	5.09"	0.44"
MG-800-24	10.05"	1.5"	6.12"	6.63"	5.5"	5.09"	0.44"
MG-1200-24	10.05"	1.5"	6.12"	6.63"	5.5"	5.09"	0.44"

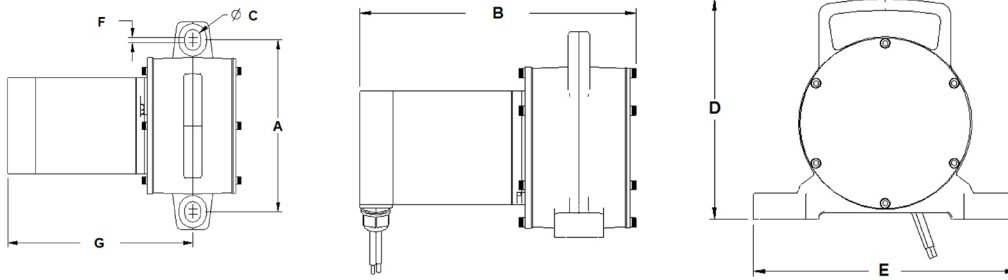
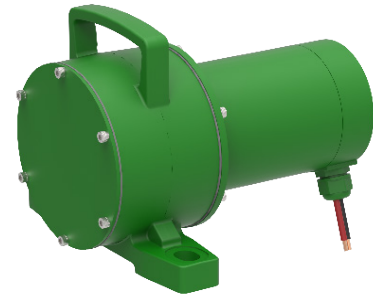
MODEL	VOLT	AMP DRAW @ 12V	WEIGHT	FORCE	FREQ. (VPM)	RECOMMENDED OPERATION TEMPERATURE	DUTY CYCLE	HOPPER / BED SIZE
MG-400-12	12V	25	16 lbs	455	5400	Optimal Operation Below 110°F	Continuous Duty	2-4 cu. yd. Hopper 4,550 lbs. max
MG-800-12	12V	25	16 lbs	845	5400	Optimal Operation Below 110°F	Continuous Duty	7-10 cu. yd. Hopper 2-5 cu. yd Bed 8,450 lbs. max
MG-1200-12	12V	25	16 lbs	1193	5400	Optimal Operation Below 110°F	Continuous Duty	6 - 12 cu. yd Bed 11,930 lbs. max
MG-400-24	24V	13	16 lbs	455	5400	Optimal Operation Below 110°F	Continuous Duty	2-4 cu. yd. Hopper 4,550 lbs. max
MG-800-24	24V	13	16 lbs	845	5400	Optimal Operation Below 110°F	Continuous Duty	7-10 cu. yd. Hopper 2-5 cu. yd Bed 8,450 lbs. max
MG-1200-24	24V	13	16 lbs	1193	5400	Optimal Operation Below 110°F	Continuous Duty	6 - 12 cu. yd Bed 11,930 lbs. max

**\*Important Operation Note:** If operational environment temperatures exceed 110°F, the vibrator **SHOULD NOT** run continuously for more than 30 minutes. Allow the vibrator to cool for at least one minute for each minute of continuous operation of up to 30 minutes.

# Large Load Truck and Trailer

## MG-3500 FOR LARGE LOADS

The MG-3500 is a high force vibrator with lower frequency to produce a strong, high stroke vibration perfect for unsticking heavy loads in large dump beds. The vibrator comes permanently lubricated making it a low maintenance option for material flow or truck dump body applications. Its rugged housing and heavy duty design with IP 66 protection can handle the toughest of environments.



MODEL	A	B	C	D	E	F	G
MG-3500	8.25"	11.18"	0.75"	8.31"	10"	0.25"	8.87"

MODEL	VOLT	AMP DRAW @ 12V	WEIGHT	FORCE	FREQ. (RPM)	RECOMMENDED OPERATION TEMPERATURE	DUTY CYCLE	BED SIZE
MG-3500	12V	60	38 lbs.	3500 lbf	4000	-4°F thru 122°F	Intermittent Duty	> 12 cu. yd. 35,000 lbs. max

### FOR MORE INFORMATION

**Call:** Sales at 800-221-3298

**Email:** sales@clevelandvibrator.com

**Buy Online:** www.clevelandvibrator.com



### ABOUT THE CLEVELAND VIBRATOR COMPANY

The Cleveland Vibrator Company has been driving innovations in materials handling since 1923. From our corporate headquarters in Cleveland, Ohio, and in partnership with HK Technologies located in Salem, Ohio, we've met

the challenges of more than 15,000 customers all around the globe in a vast array of industries. Our comprehensive product line includes air-piston, rotary electric, electromagnetic, turbine and ball vibrators, as well as a wide variety

of fabricated feeders, vibratory screeners, ultrasonic screeners, vibratory conveyers and vibratory tables used for light, medium and heavy-duty industrial applications.